

# **KESLA**

## **FORESTERI**

Uplifting Innovations



**Timber Loaders**

[WWW.KESLA.COM](http://WWW.KESLA.COM)

# **KESLA** FORESTERI



The unique V-base of the Kesla Foresteri boom section guarantees power and durability with one or two extensions.

**How do you prefer**



Adopt the innovative Kesla Foresteri solutions today, because the pioneering Foresteri leads the way to modern timber harvesting.



**Kesla Foresteri brings new  
made for professional use  
blue or Foresteri in the c**

Kesla Foresteri's reliable maintenance and spare parts services guarantee efficient performance.

Foresteri with 2 or 4 lever control directly combined with the hydraulic valves offers precise and maintenance-free usability.

The central lubrication systems have been designed to ease the servicing for the operator.

The slide bearings used in Kesla Foresteri guarantee endurance and reduce the need for maintenance.





# KESLA FORESTERI

**your Kesla Foresteri?**



**style to timber loaders  
e. Foresteri in standard  
colour of your choice.**

The design, dimensions and implementation of Kesla Foresteri hydraulic hoses have received special attention.



The stylish and practical Kesla Foresteri cabin is available for instance in stainless steel and provided with front and side doors.

The seat with its versatile adjustments offers an ergonomic and comfortable working position in the Kesla Foresteri cabin.

Kesla Foresteri with electronic control represents a modern approach.

The controls in the Kesla Foresteri cabin loader are easy to use.

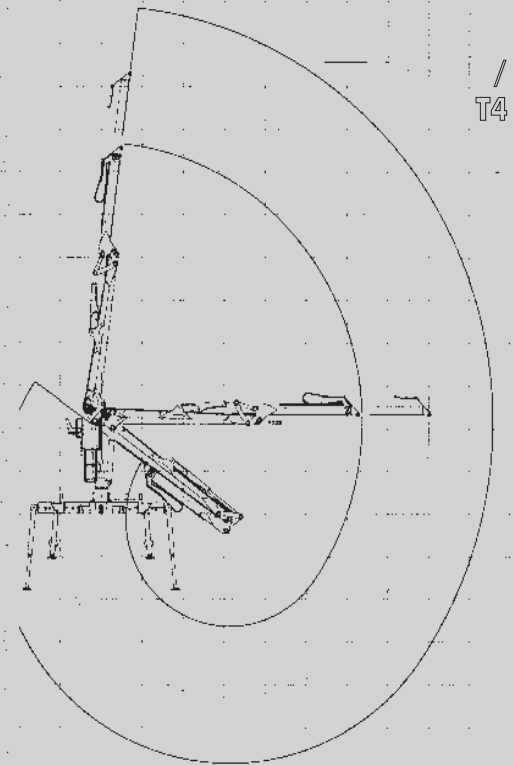
Kesla Foresteri's protected multiple-point lighting gives good working conditions in all situations and circumstances.



**KESLA**



1100	2370	1500	1590	1340	1180	kg	F-2009	
7850	7230	780	1530	1260	1390	960	kg	F-2009T4
3	4	5	6	7	8	9	9.6	m

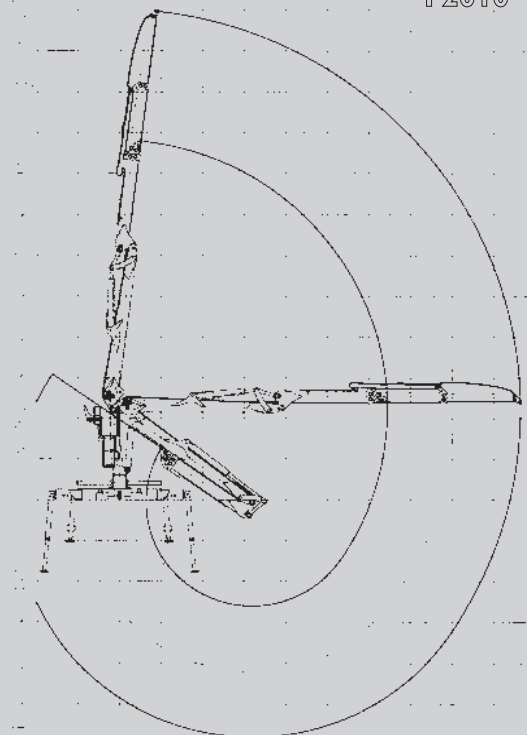


KESLA FORESTERI TECHNICAL SPECIFICATIONS			F-2008		F-2008T		F-2009		F-2009T		F-2009T4	
Lifting capacity	gross	kNm	107	79000	107	79000	117	86300	117	86300	117	86300
	net	kNm	83	61400	77	56400	93	68600	87	64200	87	64200
Outreach		mm	8023	26' 4"	9600	31' 6"	8023	26' 4"	9600	31' 6"	9600	31' 6"
Stroke of boom extension		mm	1600	5'3"	1600	2x5'3"	1600	5' 3"	2x1600	2x5' 3"	2x1600	2x5' 3"
Height: mounting level - top joint of column		mm	2170	7' 1"	2170	7' 1"	2170	7' 1"	2170	7' 1"	2170	7' 1"
Slewing torque (17,5 MPa)		kNm	18,6	13700	18,6	13700	18,6	13700	18,6	13700	23,7	17500
Slewing angle		°	415	415	415	415	415	415	415	415	415	415
Weight with controls and stabilizers but without grapple, rotator and hydraulic oil		kg	1790	3950	1910	4210	1840	4050	1960	4330	2090	4610
Pump recommendation												
- working pressure		MPa	24,0	3480	24,0	3480	24,0	3480	24,0	3480	24,0	3480
- flow	single pump	l/min	70-90	18-24	70-90	18-24	70-90	18-24	70-90	18-24	70-90	18-24
	double pump	GPM (US)	2x60-80	2x15-21	2x60-80	2x15-21	2x60-80	2x15-21	2x60-80	2x15-21	2x60-80	2x15-21
- power input	single pump	kW	28-36	38-49	28-36	38-49	28-36	38-49	28-36	38-49	28-36	38-49
	double pump	hp	48-64	65-87	48-64	65-87	48-64	65-87	48-64	65-87	48-64	65-87

Listed values without obligation. All rights reserved. The loaders shown in the photographs may contain optional accessories.

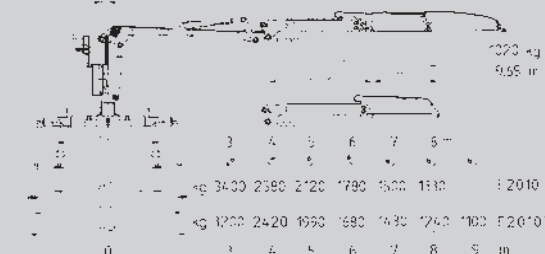


F2010T  
F2010



<b>KESLA FORESTERI TECHNICAL SPECIFICATIONS</b>			<b>F-2010</b>		<b>F-2010T</b>	
Lifting capacity	gross	kNm lbft	133	98100	133	98100
	net	kNm lbft	105	77400	99	73000
Outreach		mm ft	8050	26' 5"	9650	31' 8"
Stroke of boom extension		mm ft	1600	5' 3"	2x1600	2x5' 3"
Height: mounting level - top joint of column		mm ft	2220	7' 3"	2220	7' 3"
Slewing torque (17,5 MPa)		kNm lbft	23,7	17500	23,7	17500
Slewing angle		° °	415	415	415	415
Weight with controls and stabilizers but without grapple, rotator and hydraulic oil		kg lbs	2090	4610	2220	4900
Pump recommendation						
- working pressure		MPa PSI	24,0	3480	24,0	3480
- flow	single pump	l/min GPM (US)	80-140	21-37	80-140	21-37
	double pump	l/min GPM (US)	2x70-120	2x18-32	2x70-120	2x18-32
- power input	single pump	kW hp	32-56	43-76	32-56	43-76
	double pump	kW hp	56-96	76-130	56-96	76-130

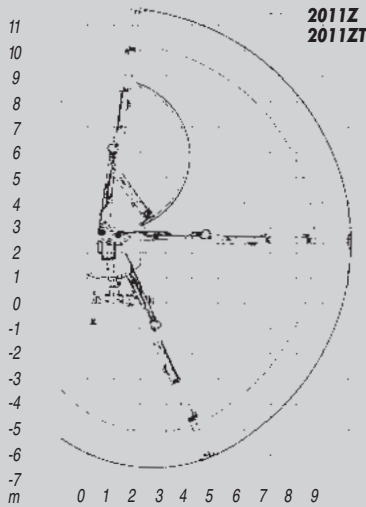
Listed values without obligation. All rights reserved. The loaders shown in the photographs may contain optional accessories.



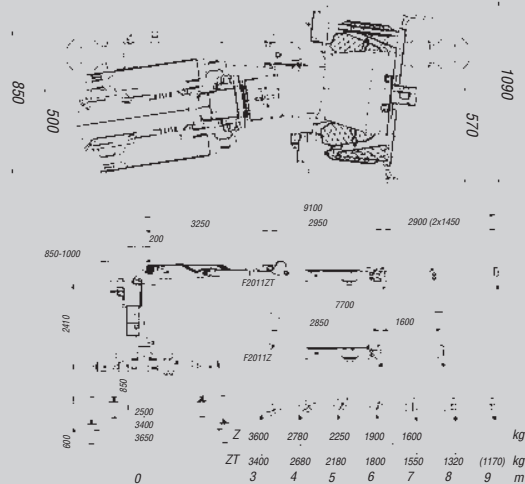




Kesla Foresteri 2011Z models feature excellent outreach, and the loaders can be equipped with cabin. Kesla Foresteri Z models are also available in the 5 tonne metre class.

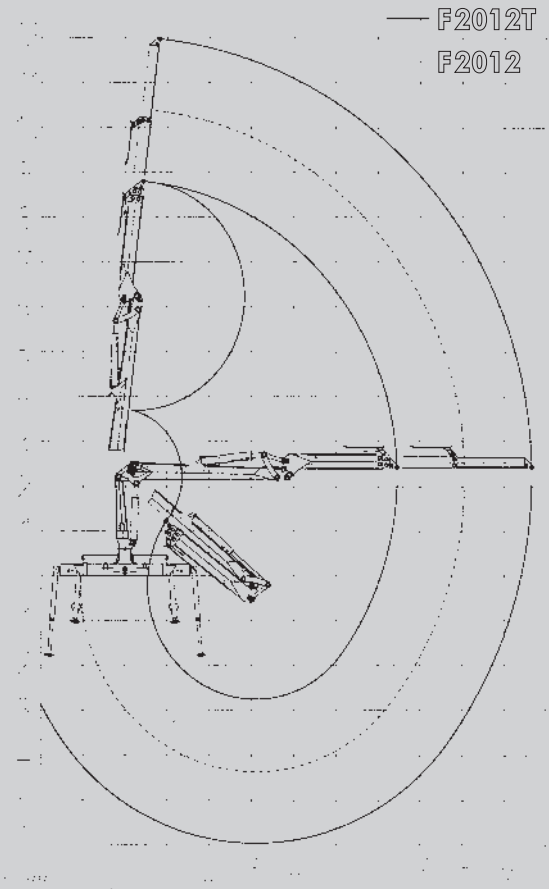


2011Z  
2011ZT



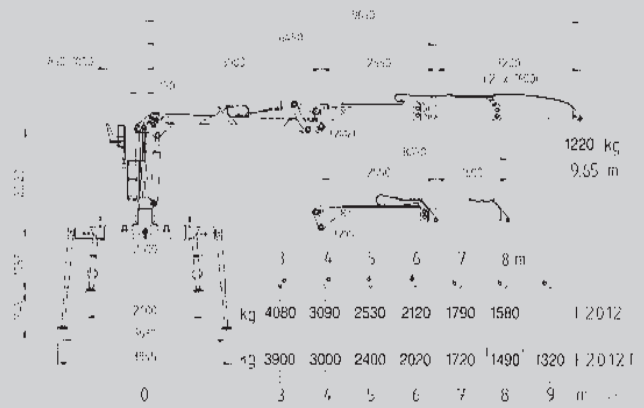
<b>KESLA FORESTERI TECHNICAL SPECIFICATIONS</b>				<b>F-2005Z</b>		<b>F-2005ZT</b>		<b>F-2011Z</b>		<b>F-2011ZT</b>	
Lifting capacity	gross	kNm	lbft	66.5	49000	66.5	49000	140	103200	140	103200
	net	kNm	lbft	59	43500	54	39800	110	81100	105	77400
Outreach		mm	ft	5850	19' 2"	7150	23' 5"	7700	25' 3"	9100	29' 10"
Stroke of boom extension		mm	ft	1200	3' 11"	2x1200	2x3' 11"	1600	5' 3"	2x1450	2x4' 9"
Height: mounting level - top joint of column		mm	ft	2145	7' 1"	2145	7' 1"	2410	7' 11"	2410	7' 11"
Slewing torque (17,5 MPa)		kNm	lbft	12.7	9300	12.7	9300	21	15500	21	15500
Slewing angle		°	°	415	415	415	415	415	415	415	415
Weight with controls and stabilizers but without grapple, rotator and hydraulic oil		kg	lbs	1380	3040	1520	3350	2150	4750	2290	5050
Pump recommendation											
- working pressure		MPa	PSI	21,0	3045	21,0	3045	24,0	3480	24,0	3480
- flow	single pump	l/min	GPM (US)	45-70	12-18	45-70	12-18	70-90	18-24	70-90	18-24
	double pump	l/min	GPM (US)					2x60-80	2x16-21	2x60-80	2x16-21
- power input	single pump	kW	hp					28-36	28-49	28-36	38-49
	double pump	kW	hp					48-64	65-87	48-64	65-87

Listed values without obligation. All rights reserved. The loaders shown in the photographs may contain optional accessories.



<b>KESLA FORESTERI TECHNICAL SPECIFICATIONS</b>				<b>F-2012</b>		<b>F-2012T</b>	
Lifting capacity	gross	kNm	lbf	154	113600	154	113600
	net	kNm	lbf	125	92200	119	87800
Outreach		mm	ft	8050	26' 5"	9650	31' 8"
Stroke of boom extension		mm	ft	1600	5' 3"	2x1600	2x5' 3"
Height: mounting level - top joint of column		mm	ft	2220	7' 3"	2220	7' 3"
Slewing torque (17,5 MPa)		kNm	lbf	23,7	17500	23,7	17500
Slewing angle		°	°	415	415	415	415
Weight with controls and stabilizers but without grapple, rotator and hydraulic oil		kg	lbs	2220	4860	2340	5170
Pump recommendation							
- working pressure		MPa	PSI	24,0	3480	24,0	3480
- flow	single pump	l/min	GPM (US)	80-140	21-37	80-140	21-37
	double pump	l/min	GPM (US)	2x70-120	2x18-32	2x70-120	2x18-32
- power input	single pump	kW	hp	32-56	43-76	32-56	43-76
	double pump	kW	hp	56-96	76-130	56-96	76-130

Listed values without obligation. All rights reserved. The loaders shown in the photographs may contain optional accessories.





Foresteri is relied in permanent installations - for timber handling at sawmills, terminals and ports. The cranes are equipped according to customer wishes.

<b>KESLA FORESTERI TECHNICAL SPECIFICATIONS</b>			<b>F-2024</b>	
Lifting capacity	net	kNm lbft	240	177000
Outreach		mm ft	8200	26'11"
Stroke of boom extension		mm ft	1700	5' 7"
Road height		mm ft	2585	8' 6"
Slewing torque, gross	(17,5 MPa)	kNm lb	42	31000
Slewing angle		° °	415	415
Weight without grapple, rotator, oil and stabilizers		kg lb	2400	5290
Road height without stabilizers		mm ft	2174	7' 2"
Outreach/lifting capacity		kg lb	4m/5800	13ft/12800
			6m/3900	20ft/8600
			8m/2800	26ft/6200
Pump recommendation				
- max. working pressure		MPa PSI	27	3900
- oil flow		l/min GPM (US)	90/2x90	24/2x24
- power input		kW hp	41-82	55-110

Listed values without obligation. All rights reserved. The loaders shown in the photographs may contain optional accessories.



### Cabins



It is safe and comfortable to work in the spacious and modern Kesla Foresteri cabin. Foresteri cabins are always equipped as per customer wishes. Two Kesla Foresteri cabin models available (NT/SR).

### Scales



Easy-to-use loading scales ensure ideal load size, hence increasing the productivity of timber handling and transport. Various models available.

### Weather guard



Easily installed and used Kesla Foresteri weather guard protects against wind and rain.

### Rotators



The Kesla Foresteri range contains a rotator option suitable for each size category and for all needs.

### Grapples



Kesla Foresteri timber grapples have been designed and manufactured for professionals on the basis of their needs. Four sizes of grapples are available (29/38/41/45).

### Centralized lubrication



Kesla Foresteri is available with a centralized factory-installed lubrication system for the lubrication of the entire loader. A unique single-point lubrication system is also available for the grapple.



**KESLA** FORESTERI  
PATU  
XS

Timber Loaders  
Loaders and Trailers  
Harvester Heads  
Access Platforms  
Drum Chippers

## Uplifting Innovations

### Kesla quality and experience of more than 45 years

You may come across Kesla's machine brands Kesla Patu, Kesla Foresteri and Kesla XS in any part of the world. During its 45 years of existence, Kesla has accumulated both technical expertise and ability to listen to the needs of the users.

Kesla provide their customers *loaders, trailers, harvester heads, wood chippers* and *access platforms* for even stricter requirements in the field.

### CONTACT US TODAY:

Distributor:

Sales and Service:

Manufacturer:



KESLA Oyj  
Kuurnankatu 24  
FI-80100 Joensuu  
FINLAND  
Tel. +358 (13) 682 841  
Fax +358 (13) 682 8300  
[www.kesla.com](http://www.kesla.com)